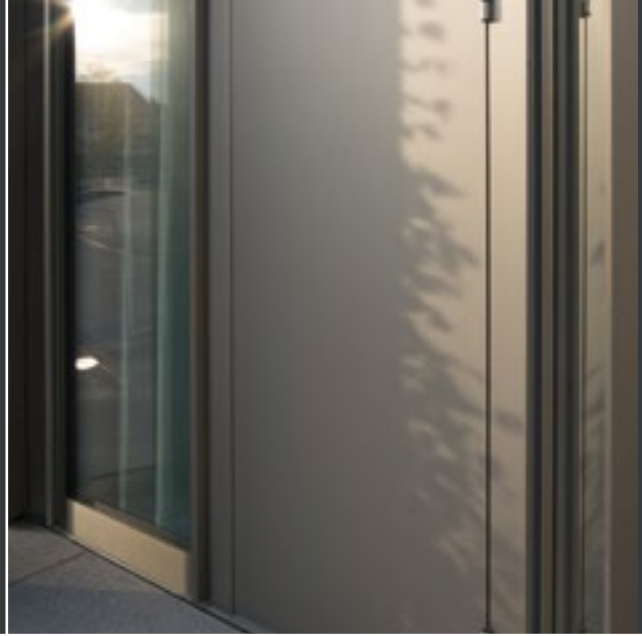


GUTMANN S80+HW



Blumenrain | Switzerland



ALUMINIUM
DOOR SYSTEM



SYSTEM DESCRIPTION

Premium door in the 80 mm series with peak value of $U_f = 1.8 \text{ W/m}^2\text{K}$.

- › Profiles in multiple chamber system with symmetrical structure to counter bimetallic effect.
- › Uniform angle brackets for frame and sash profiles.
- › Rational installation of mortise locks and striking plates with slide blocks.
- › Identical frame profile for inward and outward opening doors.
- › Identical surface-mounted and barrel hinges for inward and outward opening doors in aluminium and stainless steel.
- › High sealing values against heavy rain and wind load.
- › Door sash with optional sash-enclosing infill.
- › 1 and 2 sash doors (optional panic function) with side panel and transom light.
- › Fitting lock side: delivery in cooperation with esco Metallbausysteme GmbH.
- › Burglar resistance RC 2 in accordance with DIN EN 1627, 1- and 2-sash, with panic function.

SYSTEM PROPERTIES OF CLASSES



Water tightness

E900



Wind load

C4/B4



Air permeability

4

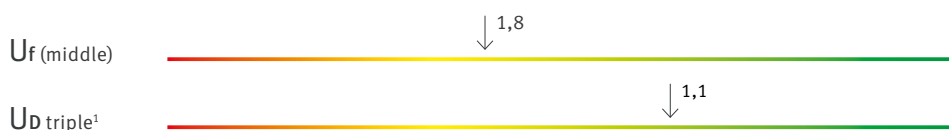


Operating forces

2

PB 12-001311-PR 02

THERMAL INSULATION



¹ Element size: 1,230 x 2,180 mm | U_g value: $0.6 \text{ W/m}^2\text{K}$ | Glass spacer: Swisspacer Ultimate

SYSTEM CROSS SECTION

