

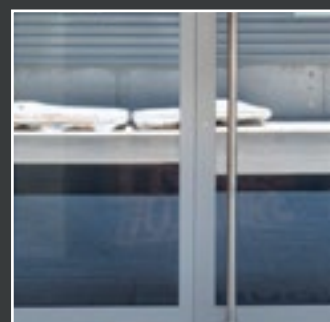
# GUTMANN S70+

NG / EMPFANG

HUG | Switzerland



ALUMINIUM  
DOOR SYSTEM



## SYSTEM DESCRIPTION

Standard doors in the 70 mm series with an Insulation value of  $U_f = 2.7 \text{ W/m}^2\text{K}$ .

- › Continuous compatibility of profiles / accessories and gaskets with the S70+ window series, therefore fewer system accessories.
- › Sash profiles with flexible, perforated PA 6.6 bridges to counter bimetallic effect.
- › Rational installation of mortise locks and striking plates with slide blocks.
- › Profiles in three chamber system.
- › Door sash with optional sash-enclosing infill.
- › Burglar resistance up to WK 3/RC 3.
- › 1 and 2 sash doors (optional panic function) with side panel and transom light.
- › Fitting lock side: delivery in cooperation with esco Metallbausysteme GmbH.

## SYSTEM PROPERTIES OF CLASSES

	Water tightness	<b>5A</b> (200 PA) <sup>1)</sup> <b>2A</b> (50 PA) <sup>2)</sup>		Wind load	<b>C 2</b>
	Air permeability	<b>2</b>		Operating forces	<b>-</b>

<sup>1)</sup> Outward opening <sup>2)</sup> Inward opening

## THERMAL INSULATION



<sup>1</sup> Element size: 1,230 x 2,180 mm |  $U_g$  value: 0.6  $\text{W/m}^2\text{K}$  | Glass spacer: Swisspacer Ultimate

## SYSTEM CROSS SECTION

