

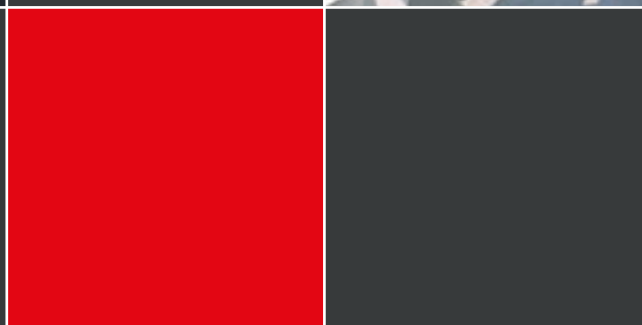
GUTMANN MIRA



NOLL Tower | Freiburg



WOOD-ALUMINIUM
WINDOW SYSTEM







SYSTEM DESCRIPTION

The GUTMANN MIRA system can be executed in double, single and pitched rebate construction.

- › The profiles are available with radiused visible edges or an angular design for special architectural requirements.
- › A wide range of transom and mullion profiles for optimal profile joints and optimized structural connections round out the product line.
- › Thanks to proven fastening technology, the system impresses with installation-friendly and, above all, economic fastening of the aluminium shells to the wooden part.
- › In addition, the available plinth heights enable compensation for different wood projections.
- › A wide selection of gaskets provides the optimum solution for every area of application.
- › Execution as a composite sash assembly, sash variant or pitched rebate assembly provides additional window design options. The frames are available in either a welded version or a version with robust punched corner connections.

SYSTEM PROPERTIES OF CLASSES

	Water tightness	9A		Wind load	C3/B3
	Air permeability	4		Operating forces	1

Test sample: Double-sashed tilt & turn window with operable center section (2,200 mm x 2,200 mm)
Test report 101 35020/4

THERMAL INSULATION



¹ Element size: 1,230 x 1,480 mm | Wood species: Spruce | Wood thickness: 68 mm | U_g value: 0.6 W/m²K | Glass spacer: Thermix TX.N plus

SYSTEM CROSS SECTION

