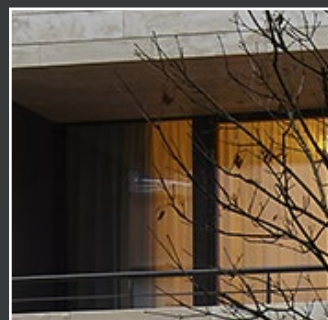


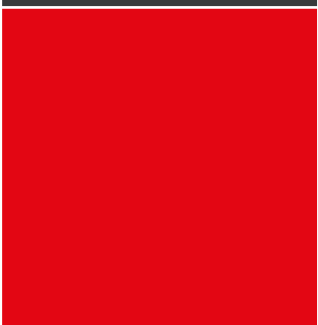
GUTMANN MIRA contour



Residence Nicolas Wies | Luxembourg



WOOD-ALUMINIUM
WINDOW SYSTEM







SYSTEM DESCRIPTION

The GUTMANN MIRA contour system can be executed in single, double and pitched rebate construction.

- › The GUTMANN MIRA contour can be inserted in the GUTMANN MIRA system as the standard wood cross section in the classical style for an offset appearance.
- › Use of the VFM sash enables flush construction without any change in the standard wood sash cross section in the GUTMANN MIRA system.
- › The narrow sash faces round out the system.
- › The accessory range from the GUTMANN MIRA system can be processed without restriction.
- › The frame connections are welded or available with robust punched corner connections.

SYSTEM PROPERTIES OF CLASSES

	Water tightness	9A		Wind load	C3/B3
	Air permeability	4		Operating forces	1

Test sample: Double-sashed tilt & turn window with operable center section (2,200 mm x 2,200 mm)
GAS 15537808 from test report 10135020/4

THERMAL INSULATION



¹ Element size: 1,230 x 1,480 mm | Wood species: Spruce | Wood thickness: 68 mm | U_g value: 0.6 W/m²K | Glass spacer: Thermix TX.N plus

SYSTEM CROSS SECTION

